

M' AINM / MY NAME:

GNÌOMH AN-DIUGH / TODAY'S ACTIVITY:

Dissect a Flower

Faic dè tha am broinn shithein

Dissect a flower to see all the different plants that it is made of!

Bheir sùil am broinn shithein - tha tòrr ann!

You will need: a flower (Lily, Iris, Daffodil, tulip works well),
paper plates or a cardboard sheet, magnifying glass (optional), tweezers and scissors

1. Lay your flower out on a plate or cardboard sheet. Can you identify any of the parts from the diagram?

2. Cut out and label the separate parts of the flower.

3. Try to find the following:

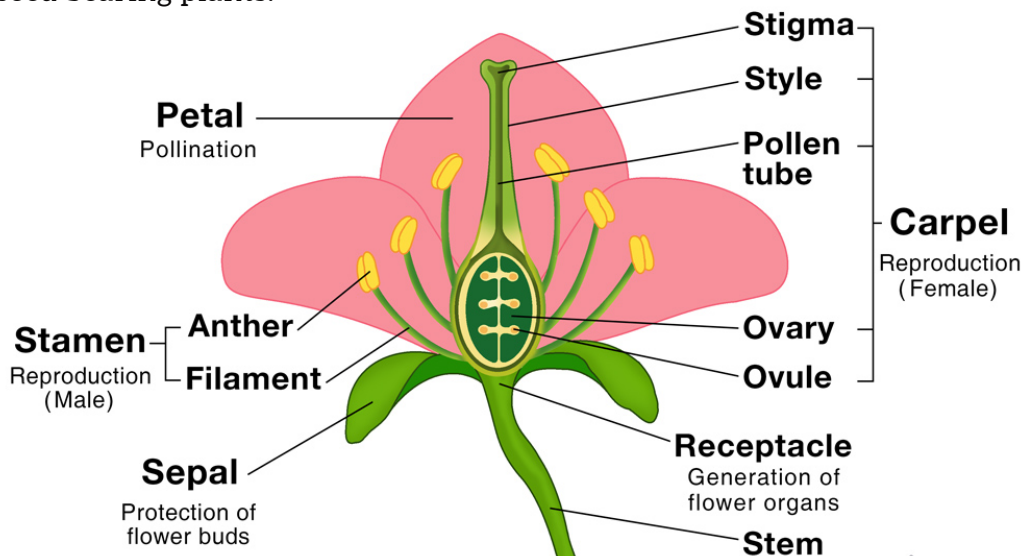
Root - transports water and nutrients from the soil to the plant. It also keeps it anchored in the ground.

Stem - transports water and nutrients from the soil to the plant. Supports the leaves and flowers so they can be raised above ground, into the light.

Petal - coloured to attract insects

Leaf - uses energy from the sun in the photosynthesis process. Creating oxygen and sugars to make energy for the plant to grow

Pollen - this fine powdery substance contains the male reproductive cells. Produced by the anthers of seed bearing plants.

**Can you answer these questions?**

What is pollination?

What is fertilisation?

What is germination?

We'd love to see your plant labels and answers to the questions, so if you want to share them with us, put a wee picture or video on your Facebook or Instagram and tag your local land trust (or all of us) @UrrasOG @WestHarrisTrust or @NorthHarrisTrust